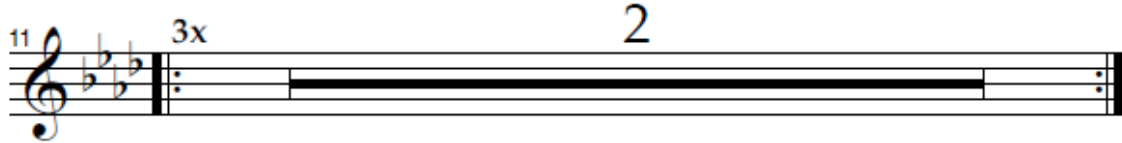
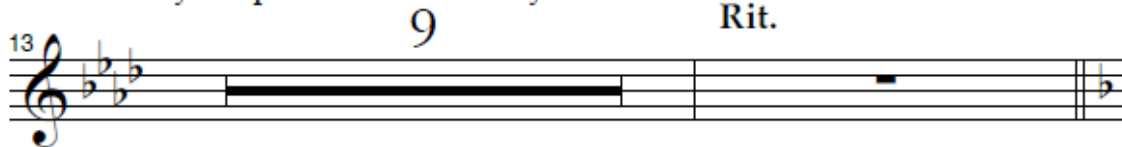


MARY POPPINS: I'm Mary Poppins.
 MISS ANDREW: Mary Poppins? But you left without notice!
 MARY POPPINS: And I've come back without notice.

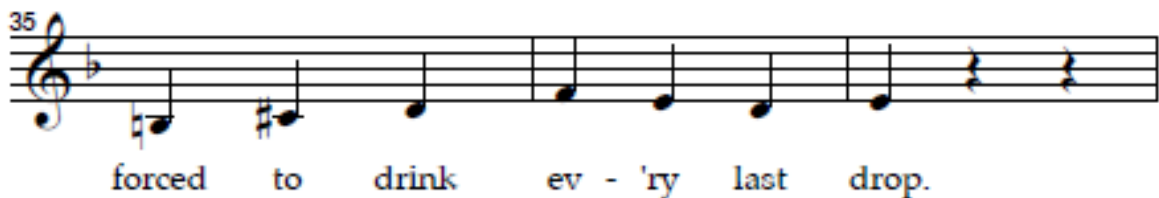
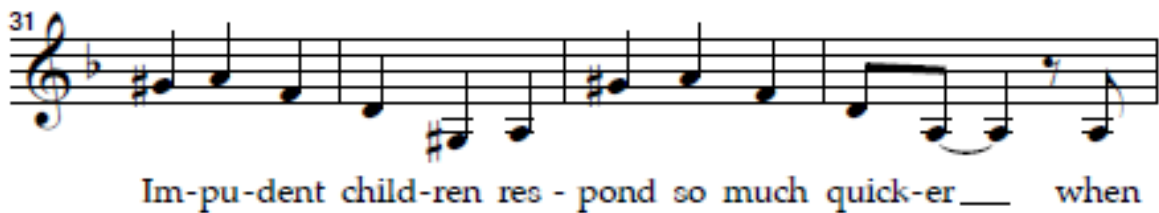
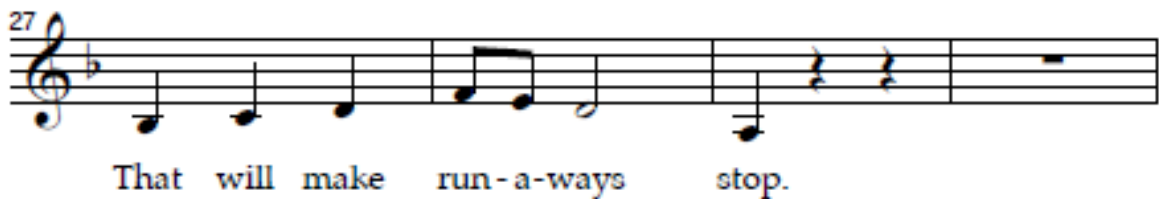
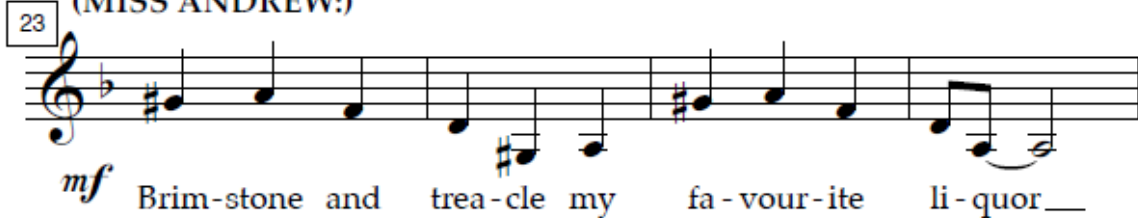


MISS ANDREW: I see. And what do you expect me to do?
 MARY POPPINS: Pack.
 MISS ANDREW: Pack? You insolent young person! How dare you speak to me this way?



Menacing

(MISS ANDREW:)



(MISS ANDREW:)

38

Musical notation for Miss Andrew's line starting at measure 38. The staff shows a treble clef, a key signature of one flat (B-flat), and a 4/4 time signature. The melody begins with a quarter rest, followed by quarter notes G4, A4, Bb4, and C5. The lyrics "I brought up their fath - er." are written below the staff.

I brought up their fath - er.

MARY POPPINS:

mp Well

(MARY POPPINS:)

41

Musical notation for Mary Poppins' line starting at measure 41. The staff shows a treble clef, a key signature of one flat (B-flat), and a 4/4 time signature. The melody begins with a quarter note G4, followed by quarter notes A4, Bb4, and C5. The lyrics "that I ___ don't doubt. You must be so" are written below the staff.

that I ___ don't doubt. You must be so

MISS ANDREW:

44

Musical notation for Miss Andrew's line starting at measure 44. The staff shows a treble clef, a key signature of one flat (B-flat), and a 4/4 time signature. The melody begins with a quarter rest, followed by quarter notes G4, A4, Bb4, and C5. The lyrics "A shin-ing ex -" are written below the staff.

f A shin-ing ex -

(MARY POPPINS:)

proud at the way he turned out.

48

Musical notation for Mary Poppins' line starting at measure 48. The staff shows a treble clef, a key signature of one flat (B-flat), and a 4/4 time signature. The melody begins with a quarter note G4, followed by quarter notes A4, Bb4, and C5. The lyrics "am - ple, a pil - lar..." are written below the staff.

am - ple, a pil - lar...

mf A post. They all have their

(MARY POPPINS:)

52

prob - lems but him more than most I

A tempo

55

rec - og - nize ful - ly__ that you are a bul - ly__ who

Meno

59

views cru - el deeds as a perk._____ *f* Well now here's a

(MARY POPPINS is holding
MISS ANDREW's medicine
bottle and a spoon.)

64

catch Be - cause you've met your match

(MARY POPPINS pours medicine into the spoon.)

MISS ANDREW:

68

Brim - stone and trea - cle for you._____

MARY POPPINS:

mf Just a spoon - ful of su - gar.

76

Poco rit.

Brim-stone and trea-cle won't

Brim-stone and trea - cle _____ won't

(With MISS ANDREW's mouth wide open to sing, MARY POPPINS gives her a spoonful of her own medicine.)

(MISS ANDREW looks incredibly ill and exits.)

Più mosso

Deliberately

(MARY POPPINS:)

2

work! _____